

# DIGITRON SEMICONDUCTORS

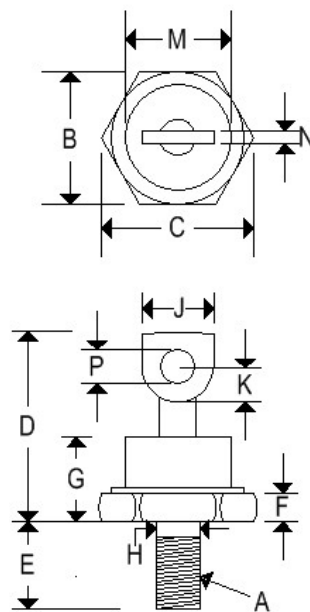
## MECHANICAL CASE OUTLINE PACKAGE DIMENSIONS

DATE 29 DEC 2017

### CASE DO-5

STUD

<b>CASE</b>	HERMETICALLY SEALED METAL AND GLASS
<b>MARKING</b>	ALPHA NUMERIC
<b>POLARITY</b>	CATHODE IS STUD (CASE)
<b>WEIGHT</b>	14 GRAMS (APPROXIMATE)



	DO-5			
	Inches		Millimeters	
	Min	Max	Min	Max
<b>A</b>	1/4-28 UNF2A threads			
<b>B</b>	0.669	0.688	16.990	17.480
<b>C</b>	-	0.794	-	20.160
<b>D</b>	-	1.000	-	25.400
<b>E</b>	0.422	0.453	10.720	11.510
<b>F</b>	0.115	0.200	2.920	5.080
<b>G</b>	-	0.450	-	11.430
<b>H</b>	0.220	0.249	5.580	6.320
<b>J</b>	0.250	0.375	6.350	9.530
<b>K</b>	0.156	-	3.960	-
<b>M</b>	-	0.667	-	16.940
<b>N</b>	0.030	0.080	0.760	2.030
<b>P</b>	0.140	0.175	3.560	4.450

This drawing is for reference only. Please refer to Digitron's published datasheet.